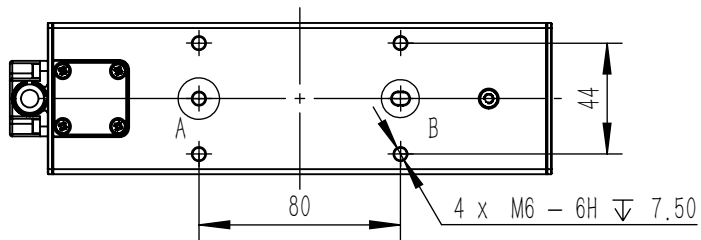
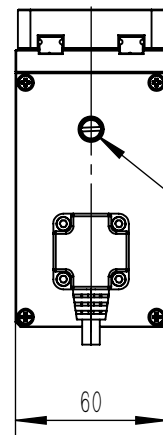
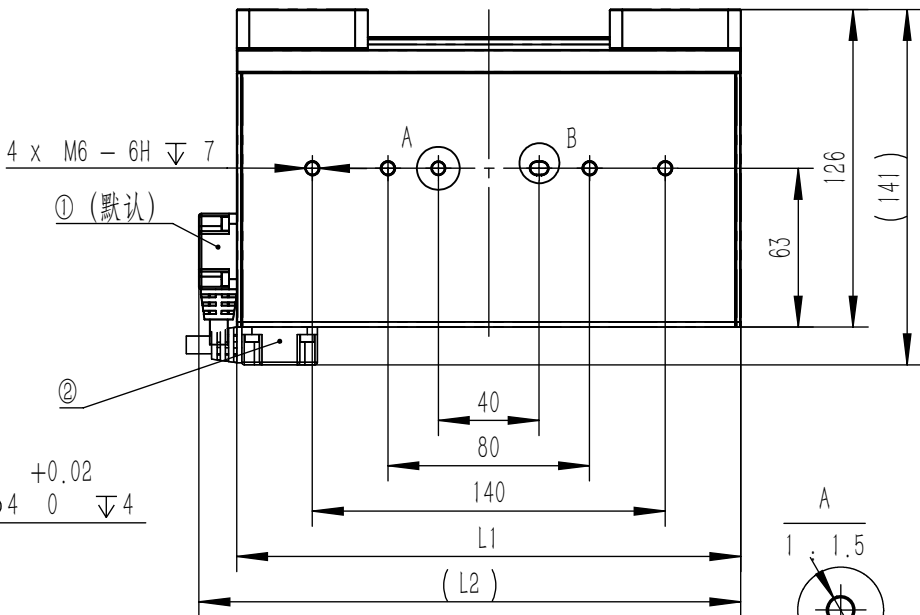
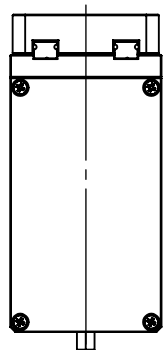


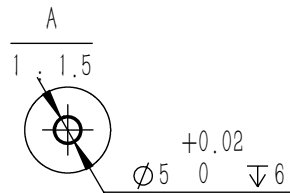
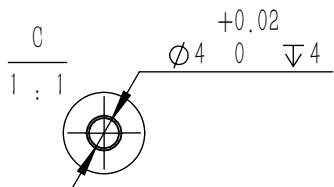
单位: mm



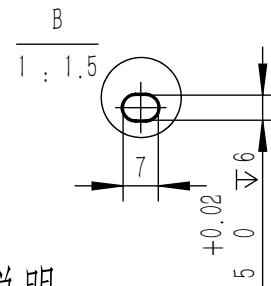
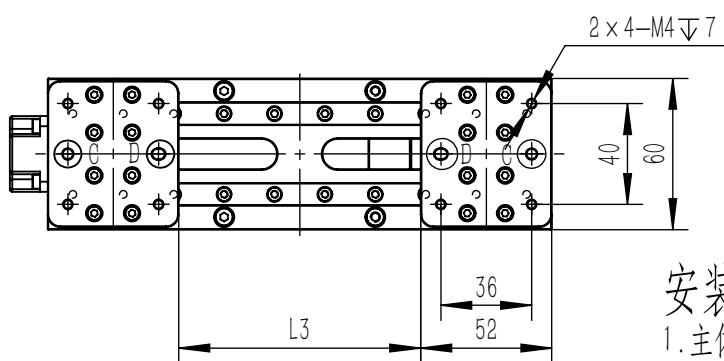
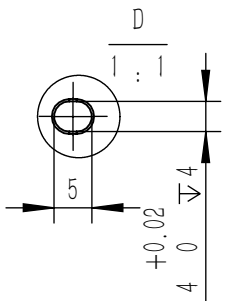
行程	80	120
L1	200	240
L2	215	255
L3	16~96	16~136



断电时可通过调节此一字螺丝位实现夹爪开合。顺时针为张开，逆时针为闭合。



注1: 夹爪可选①、②其中任意一个出线壳安装位置, 默认为①; 出线壳的朝向可根据实际需要做出调整;



安装说明:

1. 主体固定时, 请使用同一安装面上的所有螺纹孔固定;
2. 拧紧螺栓时, 不得超过螺纹孔深度;